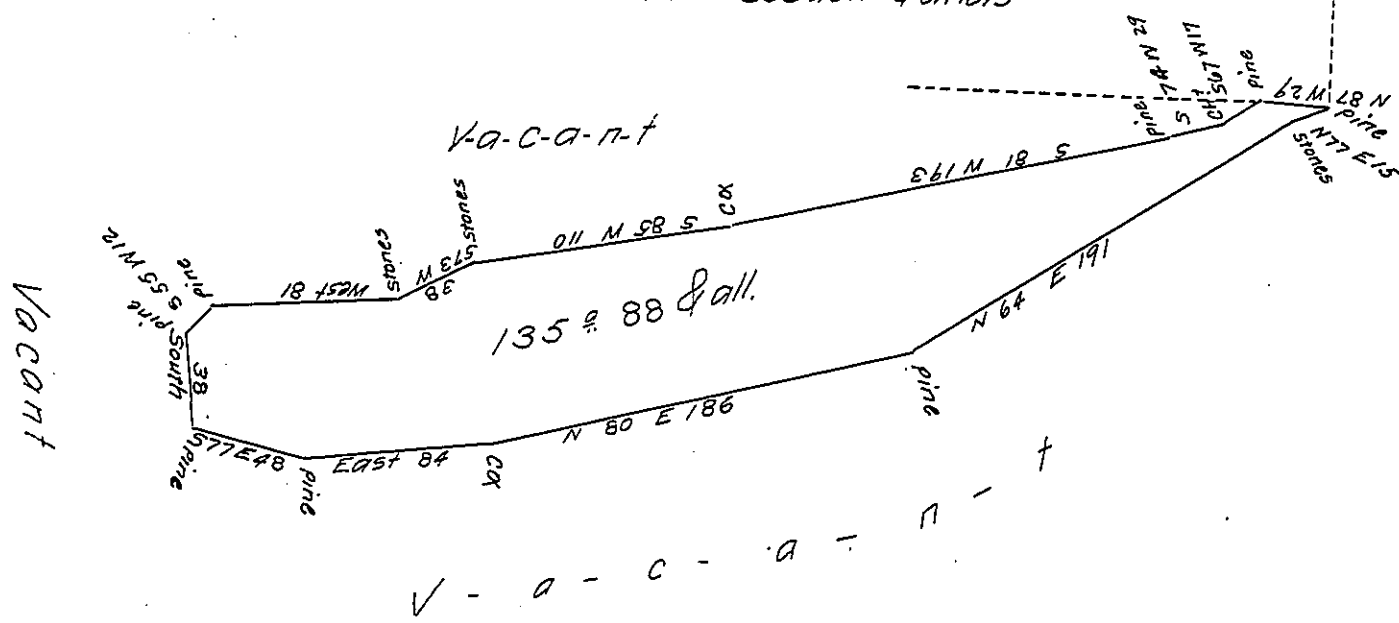


Asylum Company Lands in the name of
Richard Martin Samuel Lobdell & others



Situate on the big Mountain in Cattawissa Township Columbia County adjoining the Asylum Company Lands Containing 135 acres and 88 perches and Allowance of Six per Cent for Roads &c Surveyed on the 29th day of January 1824 unto Benjamin Sharpless by Virtue of his Warrant dated the 12th day of January AD 1824

To Samuel Cochran Esq

by Joseph Trutzman D.S.

Surveyor General

IN TESTIMONY that the above is a copy of the original remaining on file in the Department of Internal Affairs of Pennsylvania, made conformably to an Act of Assembly approved the 16th day of February, 1833, I have hereunto set my Hand and caused the Seal of said Department to be affixed at Harrisburg, this eleventh day of December 1906

Isaac P. Brown
Secretary of Internal Affairs